

Getting Started with the Senteo Interactive Response System

The Senteo[™] interactive response system is an assessment tool designed to enhance learning. You can pose questions during your presentation or lesson to make sure your audience is on track, or you can create a question set and use it as a formal assessment tool.

This *Quick Reference* has basic information about the Senteo interactive response system's hardware components, including setting up the system for your class or presentation. Before you begin, make sure that Senteo assessment software has been installed on your computer.

The receiver

The Senteo interactive response system operates on radio frequencies. The receiver acts as a hub to collect the responses from the clickers.

When you plug the receiver into an available USB port on your computer for the first time, the *Add New Hardware* wizard appears. After installing the receiver, the *Ready light* turns red, indicating that it is receiving power. This light will turn green when the receiver is both receiving power and communicating with Senteo assessment software.



The receiver

To avoid possible interference, you should position the receiver as high as possible and in plain view of the students' clickers. Also, try to position the receiver away from other wireless products such as cordless telephones or 2.4 GHz routers.

Naming the classroom

Once you have connected the receiver, and before turning the clickers on, you should name your class. If you named your classroom when you first installed the software, you won't need to take these steps. To name your classroom, do the following:

- 1 Select the **Senteo Assessment Software** icon in the *notification area*

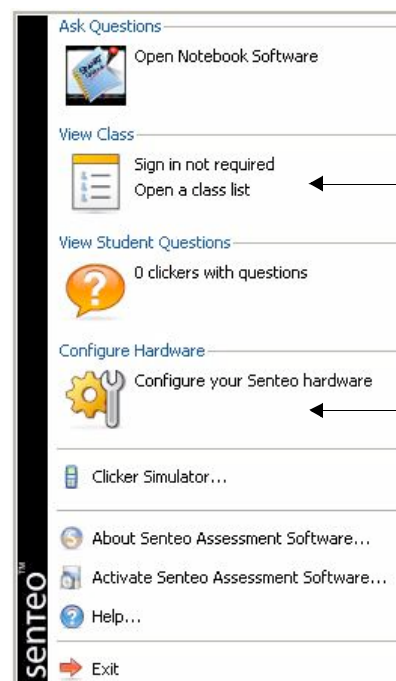


The notification area

- 2 From the menu, select **Configure your Senteo hardware**
- 3 When the *Senteo Classroom Configuration Wizard* appears, type a class name

TIP: The clickers will display a maximum of eight characters for the class name.

You can now begin to use Senteo assessment software in *Anonymous* mode.



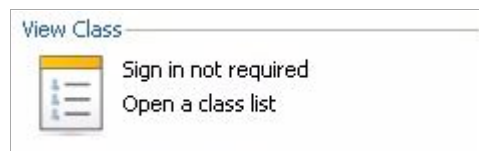
Select to set up a class list or to start Senteo assessment software in On (Anonymous) mode.

Select to name your class.

Using Senteo assessment software in Anonymous mode

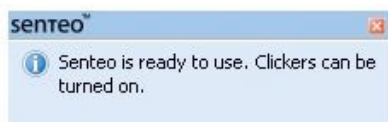
You can use the Senteo interactive response system without opening or creating a class list. In Anonymous mode, you can pose questions to be answered without assigning a particular person to a clicker. This is useful in a classroom if you wish to gauge whether your students are ready to move on. To start Senteo assessment software in Anonymous mode, do the following:

- 1 Select the **Senteo Assessment Software** icon in the notification area
- 2 Select **View Class** from the menu. The *Senteo Manager* window will appear.
- 3 Click the options arrow beside the **Status** button, and select the **On (Anonymous)** option



Click the options arrow.

Select the On (Anonymous) mode.



Once you have selected the *On (Anonymous)* mode, the receiver's power LED will turn green, and the transmit LED will flash green. Watch for the message, "Senteo is ready to use," near the notification area.

Turning on the clickers

Once you have received the message that Senteo is ready to use, the clickers can be turned on. To turn on the clickers, do the following:

- 1 Press and hold the **Power** button on the clicker for about one second
- 2 A message will appear. You can choose either to join the last class the clicker was connected to or to find a different class.
- 3 If you want to join the last class, simply press the **Enter** button
- 4 To find a different class, press the **Down** button, and then press **Enter**
- 5 Press the **Up** and **Down** buttons to scroll through the list of classes in range, and when you have found the correct one, press **Enter**

A welcome message will appear. The clickers are now ready to respond to questions.



Power button

Up and Down buttons

Enter button